



- XIAMEN - AVIOAUTO - CO.,LTD

Xiamen Avio Auto Co.,LTD

E-mail: info@avioauto.com

Add: B109, Guangcai Auto Zone, NO.29 Yibin Road, Xiamen China

Tel: +86-592-6016002

[PARTNER BRAND]





COMPANY PROFILE

· Xiamen Avio Auto Co.,Ltd is leading supplier of auto spare parts and accessories. We have been continuously improving product quality and service based on the principle of "One-stop Shopping Center for auto parts, and Customer First". A variety of auto parts with competitive prices are exported to the United States, Southeast Asia, Africa and other areas in the world.

· We are not only brand distributor for King Long, Golden Dragon, Shenlong and Higer, also engage in auto parts for Yutong, JAC, Foton, Volvo, Cummins, ect. Besides, other kinds of parts are also available, Japanese generator, brake disc, brake pads, Meritor axles, Shanghai Fleetguard filters, bus lamp series, Firestone air bags, SACHS shock absorber, clutch series, Delia sensors, tie rod, straight rod ball head series.

· Since its establishment, relying on high quality and Xiamen convenient transportation condition, our products have been sold to many countries around world, deeply trusted by customers.

· Now, we are looking for continuous improvement and committed to being customers' first choice by providing the best quality products and services.

· 厦门艾维是一家专业的客车，卡车，汽车等配件销售公司，本着“汽车零部件一站式购物中心，客户第一”的原则，我们不断提高产品质量和服务。我们可以以具有竞争力的价格为客户提供多种汽车零部件。所有这些产品都出口到美国，东南亚，非洲和世界其他地区。

· 本公司主要经营：厦门金龙、金旅、九龙、上海申龙、中通、宇通、海格、福田系列、亚星、安凯、江淮、豪沃、西沃、济南重汽等客车及福田重卡整车配件，以及日本车系列的发电机、起动机总成和配件、康明斯发动机零部件、制动盘、刹车片、美驰车桥、上海弗列加滤芯、客车灯具系列、凡士通气囊、萨克斯减震器、离合器系列、德利亚传感器、横拉杆、直拉杆球头系列。

· 公司自成立以来，产品销售到世界多个国家，深受顾客信任。厦门交通便利，拥有厦门港和厦门机场，海运、空运和陆地运输都非常便捷，本公司同时也是金龙、金旅、中通、海格、等各大客车品牌的经销商。

· 本公司和供应商均采用先进的处理技术，以及一流的生产和检测设备，生产出高品质的汽车零部件。

· 我们正在寻求持续改进，致力于通过提供最优质的产品和最好的服务成为客户的首选。





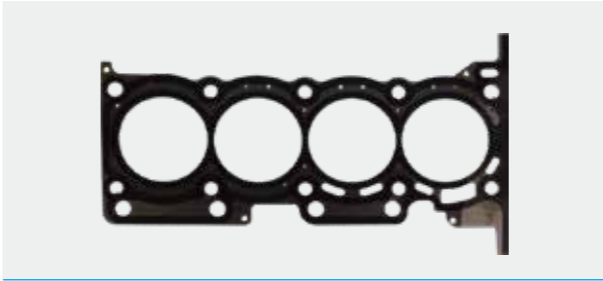
ENGINE



Foton diesel filter
Part No:WBF1212
Applicable Models:View/Tunland/Aumark



4G69 Oil filter
Part No:SMD360935V
Applicable Models:View/Gratour



Cylinder head assembly
Part No:LJ469QE2-1003400
Applicable models:Gratour



Cummins ISF3.8 Injector
Part No:5296723
Applicable models:View/Aumark



Cummins piston and ring assembly
Part No:3697230
Applicable models:Auman



Cummins ISF3.8 piston pin ring
Part No:3920691
Applicable Models:View/Aumark



Deceleration starter
Part No:QDJ2509B
Applicable models:Auman



Cummins ISF2.8/3.8 pumps
Part No:5333148
Applicable models:View/Tunland/Aumark



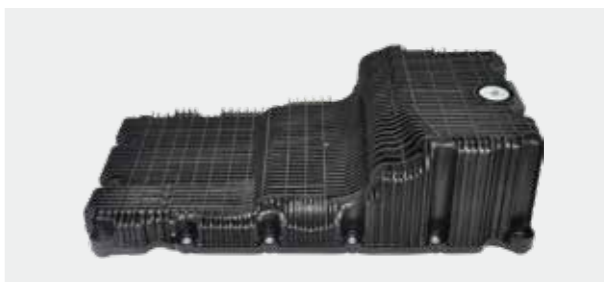
Cummins ISF2.8 piston pin
Part No:wbf1212
Applicable models:View/Tunland/Aumark



Cummins connecting rod
Part No:4083569
Applicable models:Auman



Cummins ISF3.8 air compressor
Part No:4932265
Applicable models:View/Aumark



Cummins ISF2.8 oil pan assembly
Part No:5302123
Applicable models:View/Aumark



CHASSIS



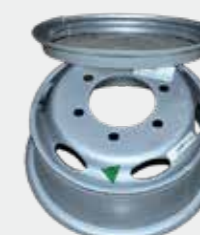
Clutch pressure plate assembly
Part No:E04930800027
Applicable models:View/Tunland/Aumark



Foton driven plate assembly
Part No:L0161030102A0
Applicable models:Aumark



Shift gear sub-assembly
Part No:47-60-648-001
Applicable models:Tunland



Rim assembly (silver gray)
Part No:1104931100031A0
Applicable models:Aumark



Transmission shaft universal joint
Part No:1653622000011Y1
Applicable models:View



Brake master cylinder assembly
Part No:1104935500071
Applicable models:Aumark



Foton hand brake cable assembly
Part No:1102935700004
Applicable Models:Aumark



Engine front suspension cushion assembly
Part No:1105110100008
Applicable models:Aumark



Steering column assembly
Part No:C4342060001A0
Applicable models:View



oil tank assembly,steering system
Part No:1105134000022
Applicable Models:Aumark



Turned to tank assembly
Part No:1105134000022
Applicable Models:Aumark



Foton electronic accelerator pedal bracket
Part No:1105911700003
Applicable Models:Aumark



AXLE TRANSMISSION



Rear axle parking brake shoe
Part No:P1117030007A0
Applicable models:Tunland



Front brake disc
Part No:1647630000021
Applicable models:View



Cummins ISF2.8 flywheel
Part No:5253213
Applicable models:View/Aumark/Tunland



Taut wheel assembly
Part No:1B16981200010
Applicable models:View/Aumark



Brake cylinder (right) II
Part No:1105930000004-03-2
Applicable models:Aumark



Reverse switch assembly
Part No:WK-21
Applicable Models:Aumark



6T100-06A-00 3rd/4th gear synchronizer assembly
Part No:5T92-3360
Applicable models:Aumark



4th gear, countershaft
Part No:JC528T6-1701443
Applicable Models:Aumark



Separation fork
Part No:5DYLI-1601015
Applicable Models:View/Tunland



Input shaft and joint tooth ring component
Part No:5MTI280N-1701110-AB
Applicable models:Aumark



Planetary gears
Part No:6480-2403013
Applicable models:View/Tunland



Treadmill range gear spacer spacer
Part No:5MTI280N-1701361-AA
Applicable models:Aumark



ELECTRICAL APPLIANCES



Dangerous alarm switch
Part No:1B18037300025
Applicable models:Aumark



AC switch
Part No:1B18081100176
Applicable models:View/Aumark



Big relay
Part No:1104936630013
Applicable models:Aumark



ECU assembly
Part No:C3100220104A0
Applicable models:Gratour



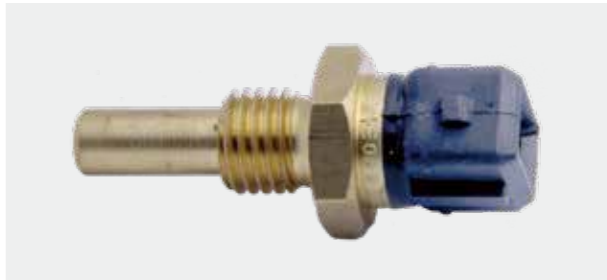
Brake light switch
Part No:1D16937300077
Applicable models:View, Tunland, Aumark



Brake light switch assembly
Part No:C3373060001A0
Applicable models:View



Battery
Part No:1110836100001
Applicable models:View/Aumark



Ambient temperature sensor
Part No:E049366000111
Applicable models:View/Tunland



Speaker assembly
Part No:1B18079100017
Applicable Models:Aumark



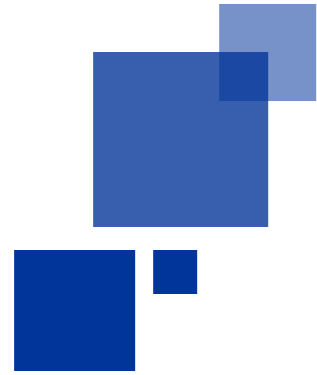
Tweeter
Part No:P1377010004A0
Applicable models:View/Tunland/Aumark



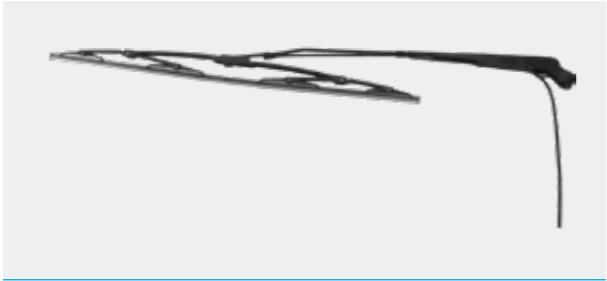
Combination instrument assembly
Part No:1B17037620001
Applicable Models:Aumark



Right front light assembly
Part No:1B18037150012
Applicable Models:Aumark



VEHICLE CAB



Left scraping arm scraping sub-assembly
Part No:L0525010041A0
Applicable models:Aumark



Side mirror assembly
Part No:L0821030006A0
Applicable models:Aumark



Wiper motor assembly
Part No:1B20052500211
Applicable models:Aumark



6486 (6 people) driver puller
Part No:1K16968100032Y1
Applicable Models:View



Dark gray right front door buttoned assembly
Part No:1K18061500182
Applicable models:View



Foton cab with interior trim
Part No:5049XXY00-AAD0141E
Applicable models:Aumark