

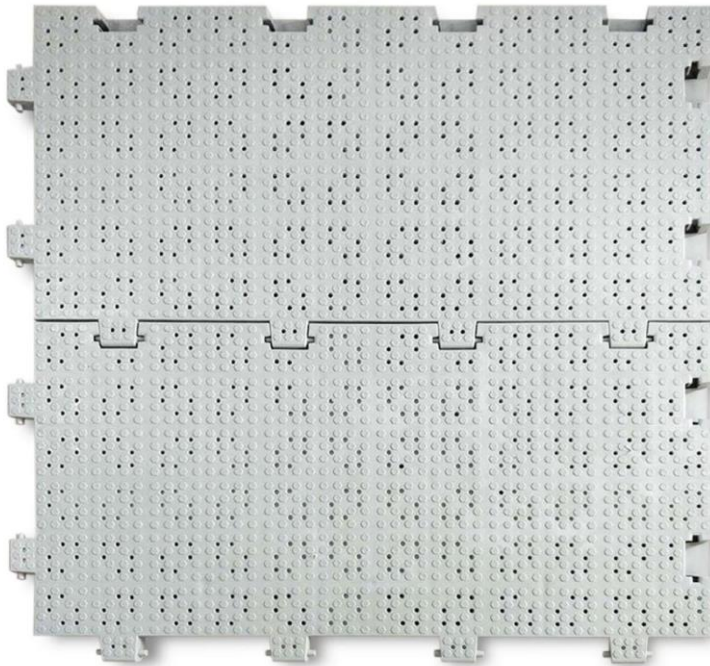
## TOP JOY TENT FLOORING

**Model:TJ-CT005**

### FEATURES AND BENEFITS

#### Easy to Install, Disassemble and Store

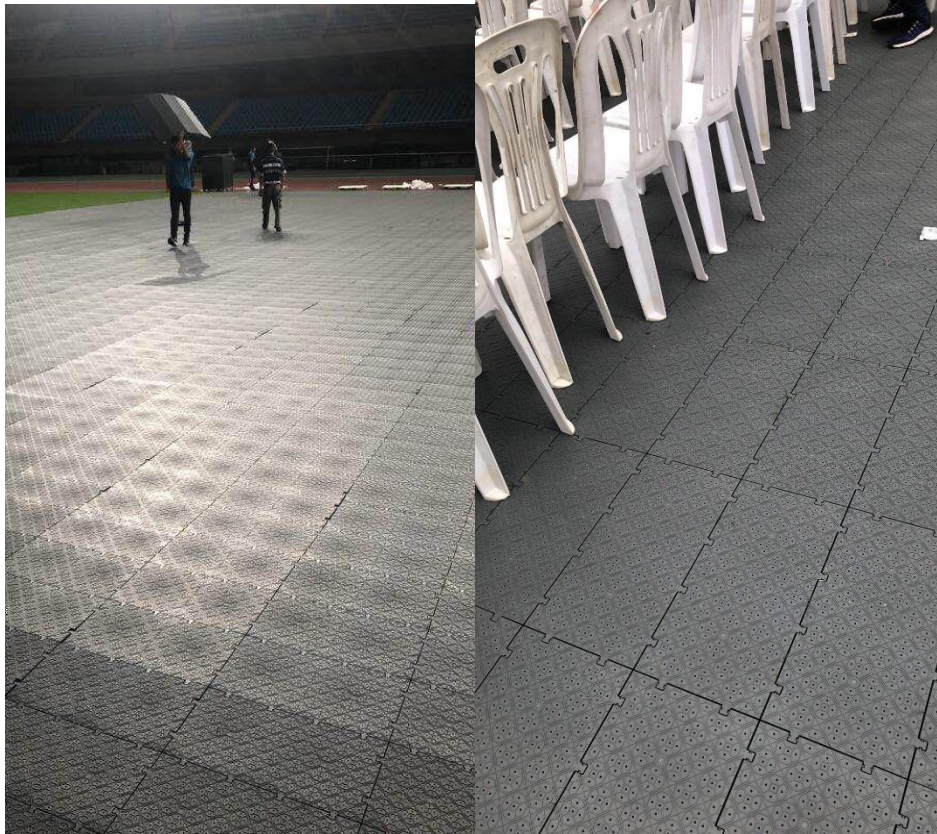
TopJoy Tent Flooring is designed to provide surface protection, access and decorative enhancement for large-scale tents and events like weddings, festivals and concerts. Its interlocking design makes quick installation and removal, with individual pieces connect on every edge to create a seamless event surface. Assembled in panels, the flooring can be rolled, allowing for easy transportation and storage.



TJ-CT005

### Durable and Reusable

With high-impact polypropylene raw material and strong base structure, TopJoy Tent Flooring provides the durability that you can rely on for each event, protecting your turf and transforming your venue for events of various sizes.



## INSTALLATION

### Fast, Easy Installation

TopJoy Tent Floor Tiles come pre-assembled in sections that allows for easy transport and storage. Sections can be positioned into place using a simple step or other downward pressure. Once modules are connected, they create a seamless professional tent flooring. Thousands of square feet of event flooring can be installed quickly and easily with minimal labor.

### Installation Times

Area (sq/ft) Time to Install

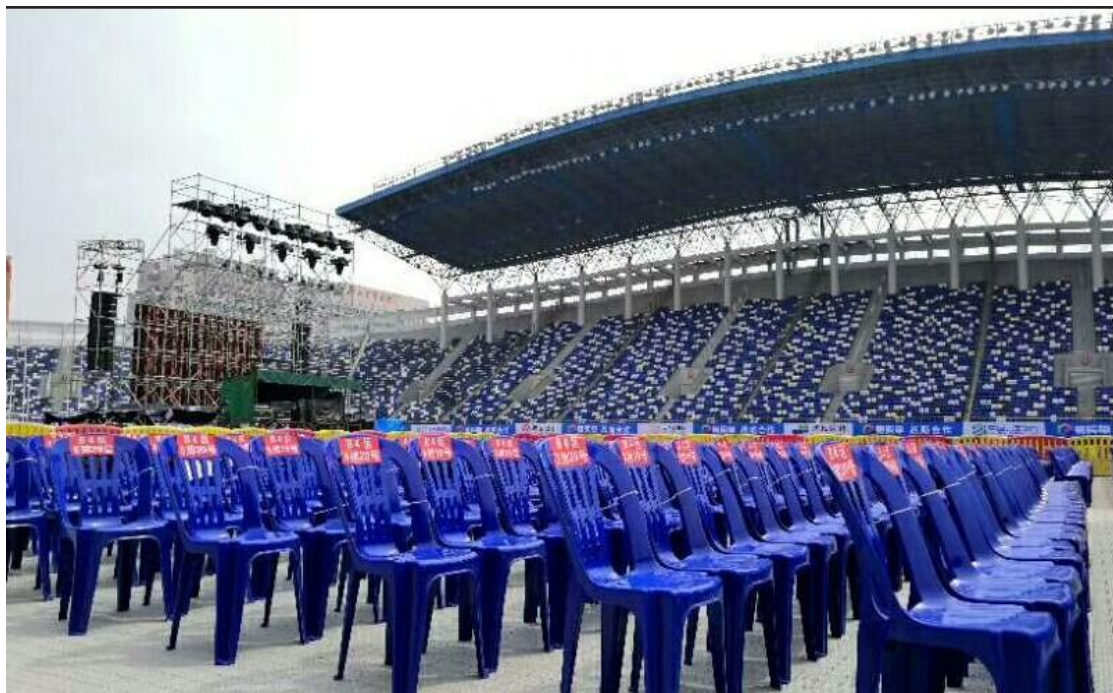
400 8 minutes – 1 person

2,400 0.7 hour – 2 people

10,000 2 hours – 4 people

60,000 6 hours – 14 people

\*Note: Times may vary depending on site access and equipment.





## SPECIFICATION

**Module Size:** 12" W x 24" L x 1.1" H (30.48 cm x 61 cm x 2.8 cm).

**Edging Specifications:** Edging size is 30.48cm\*7.5cm\*2.8cm (12" x 2.95" x 1.1"). Edging is designed to attach to flooring modules both lengthwise and widthwise, providing a gradual tapered edge. Edging extends from end of flooring module and then slopes down to ground.

**Material:** High-impact polypropylene

**Weight:** 1.41 lbs/sq ft (6.87 kg/sq meter)

**Weight Load:** 6,150 lbs/sq ft (30,000 kg/sq meter) static load, solid sub-surface

**Warranty:** 3-year warranty against manufacturer's defects

**Fire Rating:** Efl according to EN 13501-1 standard. TopJoy Tent Flooring meets applicable standards for temporary floor covers.

**Melting Point:** 320° Fahrenheit / 160° Celsius

**Operating Range:** -13°F – 149°F / -25° C – 65°C

### Shipping Recommendation

Tent flooring comes in cartons and partially assembled in sheet form. Sections may then be assembled into large or small rolls, depending on the intended use.

**Carton Size:** 94.5cm\*66.5cm\*32.5cm (37.2" x 26.2" x 12.8")

**Packing:** 33 pcs/ctn, 5.37 pcs sq/meter, 6.15 sqm/ctn(66.2 sq ft/ctn)

### Ocean Container Quantities

20' FC Ocean Container 800 sqm (8,611 sq ft)

40' HC Ocean Container 2,000 sqm (21,528 sq ft)